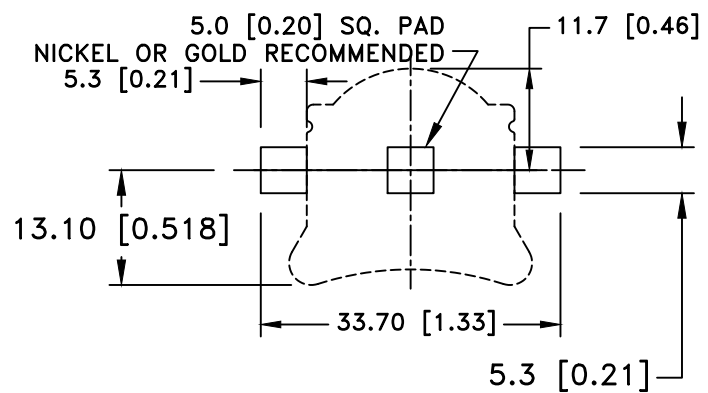
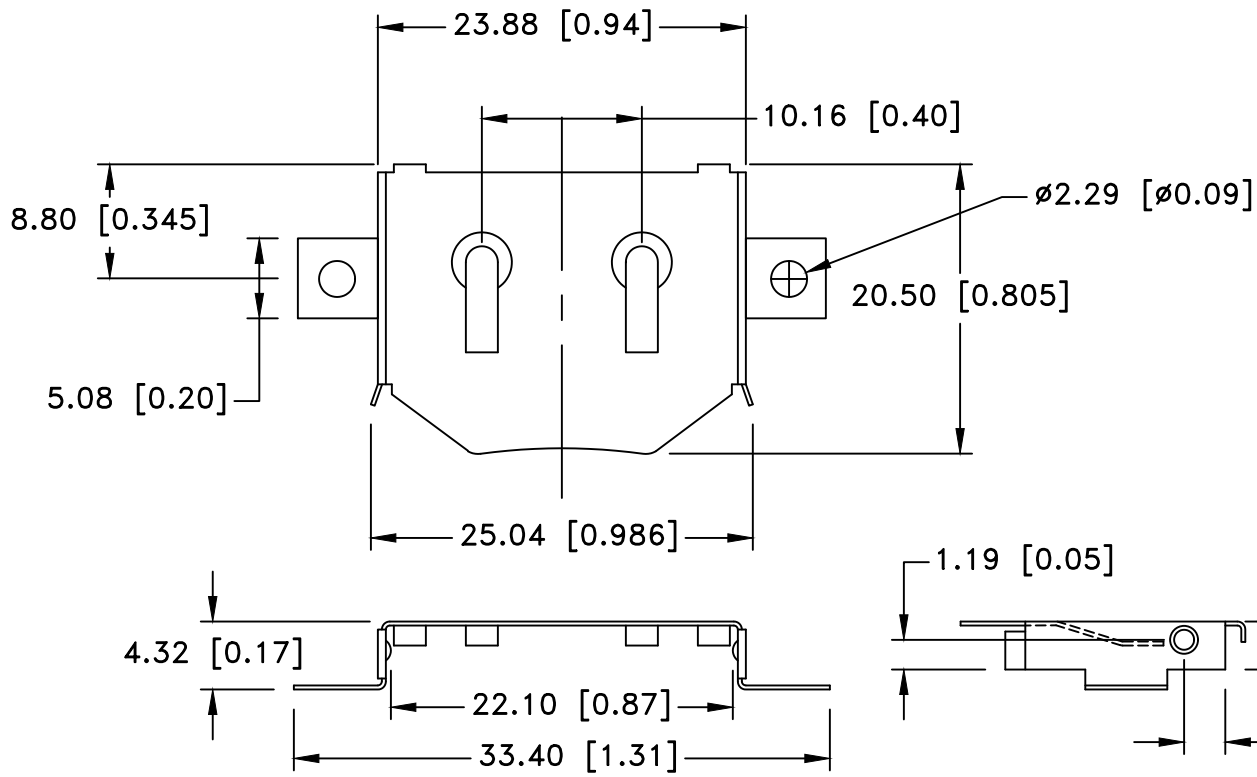
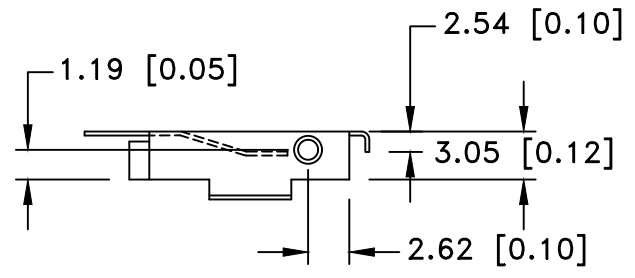




| Date | SYM | REVISION RECORD | AUTH | DR. | CK. |
|----------|-----|-----------------------------|------|------|-----|
| 06/16/17 | C | ADDED INSULATOR PART NUMBER | T.B. | B.S. | |
| 10/24/19 | D | ADDED WEIGHT OF THE PART | T.B. | B.S. | |



PCB LAYOUT




SPECIFICATION

- * Contact : Phosphor Bronze C5191, Nickel Plated 80-150u thickness
- * Vibration test: 10-50-10 hz swept in 60 seconds
x,y,z direction: 1 hour each direction
- * Result: no dislodgement of the cell or damage
no discontinuity over 10 micro-seconds
- * Shock test: half sine wave acceleration 150g.
6 milli-seconds 3 shock pulses each direction per axis,
total of 18 pulses
- * Result: no evidence of physical damage
- * ROHS COMPLIANT

Insulator Tray P/N BRX1-0003

Weight: 0.55g

| | | | |
|--------------------------------|---|--------------------------------|---------------|
| Tolerance (Except as noted) |  Memory Protection Devices, Inc 200 Broad Hollow Road, Farmingdale, New York 11735 | | |
| decimal $\pm .5$ (.020) | | Scale | Drawn By B.S. |
| Fractional $\pm .8$ (.030) | Title CR2032 SURFACE MOUNT BATTERY RETAINER | | |
| Angular $\pm 3^\circ$ | Date 10/24/19 | Drawing Number BRX1-2032-SM | |
| | | Approved By T.B. | |