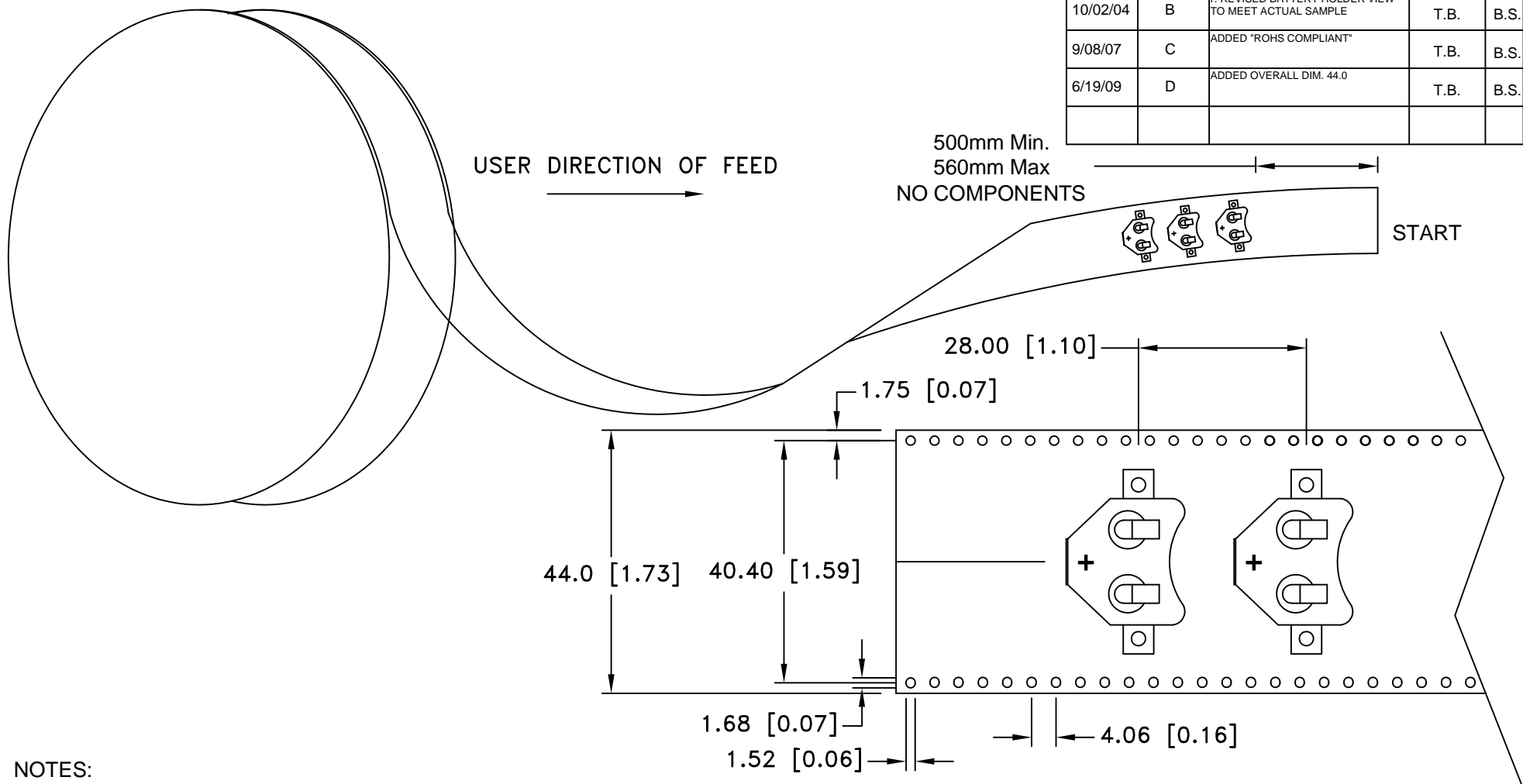



| Date | SYM | REVISION RECORD | AUTH | DR. | CK. |
|----------|-----|---|------|------|-----|
| 08/14/04 | A | 1. ADDED DIM. FOR NO COMPONENTS AREA 2. QUANTITY 450 WAS 500 | T.B. | B.S. | |
| 10/02/04 | B | 1. REVISED BATTERY HOLDER VIEW TO MEET ACTUAL SAMPLE | T.B. | B.S. | |
| 9/08/07 | C | ADDED "ROHS COMPLIANT" | T.B. | B.S. | |
| 6/19/09 | D | ADDED OVERALL DIM. 44.0 | T.B. | B.S. | |
| | | | | | |



NOTES:

1. 10 Sprocket hole pitch cumulative tolerance $\pm 0.20\text{mm}$
2. Carrier camber not to exceed 1mm in 250mm
3. Material: Black Conductive Polystyrene
4. Thickness: $0.35 \pm 0.05\text{mm}$
5. Component loader per 13" reel: 450 pcs
6. All dimensions per EIA-481-2A
7. ROHS COMPLIANT

| | | | |
|--------------------------------|---|----------------------------------|--|
| Tolerance (Except as noted) |  Memory Protection Devices, Inc 200 Broad Hollow Road, Farmingdale, New York 11735 | | |
| decimal $\pm .5$ (.020) | Scale | Drawn By B.S. | |
| Fractional $\pm .8$ (.030) | Title TAPE AND REEL SPECIFICATION FOR SURFACE MOUNT BATTERY HOLDER FOR BK-883 | | |
| Angular $\pm 3^\circ$ | Date 6/19/09 | Drawing Number BK-883-TR-REEL | |
| | | Approved By T.B. | |

