

1

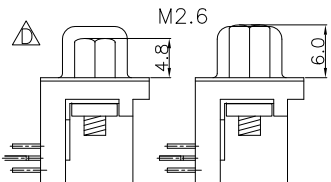
2

3

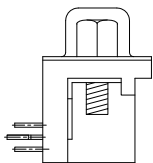
4

5

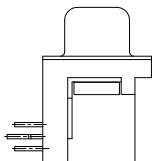
5504F1-XXS-02AA-XX-XX



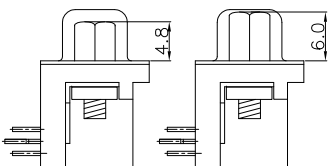
5504F1-XXS-01-XX-XX



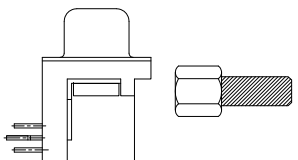
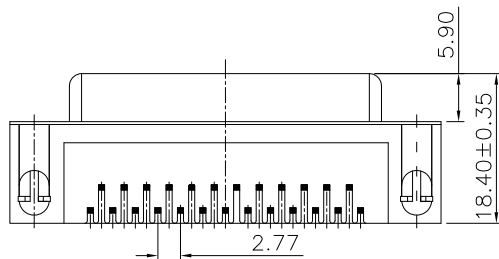
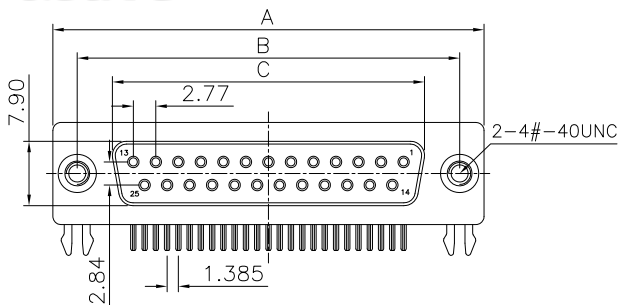
5504F1-XXS-02-XX-XX



5504F1-XXS-02A-XX-XX-XX



5504F1-XXS-02B-XX-XX

Pos	A±0.35	B±0.25	C±0.25	D±0.25
9	30.81	24.99	16.33	12.5
15	39.14	33.32	24.75	
25	53.04	47.04	38.38	
37	69.40	63.50	54.80	

Specifications:

Current Rating:3.0A AC/DC
Voltage Rating:250V AC/DC
Contact Resistance:30m ohm. max.
Insulation Resistance:1,000M ohm. min.at 500V DC
Withstanding Voltage:500V AC For One Minute
Operating Temperature Range:-55°C ~ +105°C

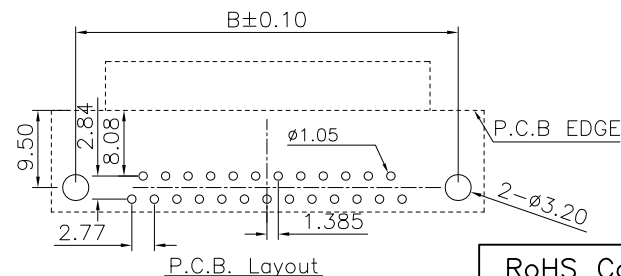
Material and Finish

Insulator:PBT(UL 94V-0),Black
Contact:Brass
Plating:Gold Plated
Shell:SPCC,Nickel Plated

How To Order

5504F1-XXS-XX-XX-XX

Blank=Hex Screw height:4.8mm
H6=Hex Screw height:6.0mm
01:Full Gold plated
03:Selective Gold Plated
01:Board Lock/Hex Screw
02:Rivet W/Board Lock
02A:Rivet W/Board Lock/Hex Screw
02B:Rivet W/Board Lock/
Attached Hex Screw
△ 02AA:Rivet W/Board Lock/M2.6 Hex Screw
S:Female
No. of Positions
8.08mm Footprint



RoHS Compliant

REV	DATE	FILE	BY
F			
E	12-AUG-2021	Modify±0.25 △	MEI
D	07-JUL-2021	△	MEI
C	02-JUN-2021	△	Lisy Liu
B	12-JUN-2020	Add "H6"(Hex Screw height: 6.0mm) TYPE	Jamie Wang
A	27-SEP-2017		Jamie Wang

DRAWN: Jamie Wang	CHECKED: Jerry Chen	APPROVAL: Mike Wu

GENERAL TOLERANCE: .X=±0.35 .XX=±0.25	UNIT: mm	SHEET: 1 / 1	PROJECTION:
	SCALE:		

Neltron Industrial Co., Ltd.	DESCRIPTION: D-SUB Female 8.08mm Footprint Right Angle Type
PART NO: △ 5504F1-XXS-XX-XX-XX	

SIZE A4

1

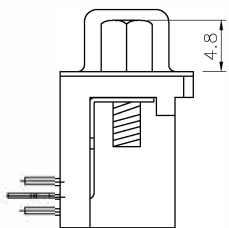
2

3

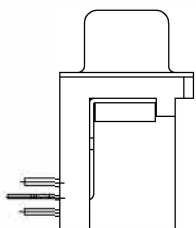
4

5

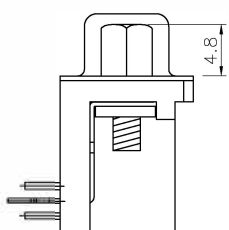
5504F2-XXS-01-XX



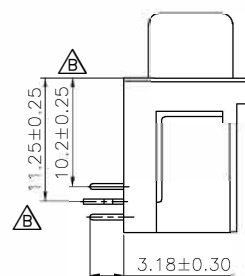
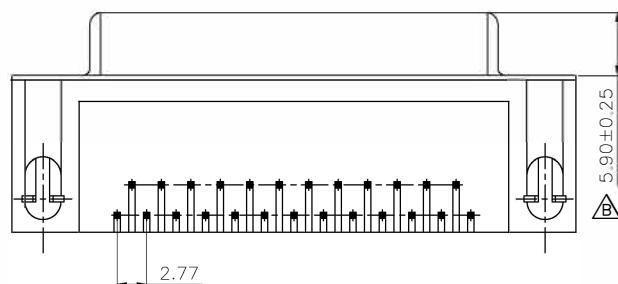
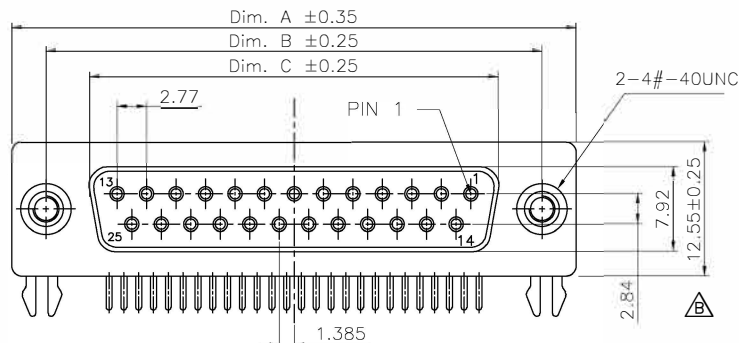
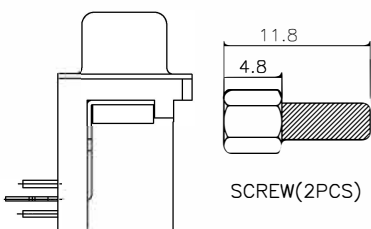
5504F2-XXS-02-XX



5504F2-XXS-02A-XX



5504F2-XXS-02B-XX



Pin	Dim.A	Dim.B	Dim.C
9	30.81	24.99	16.33
15	39.14	33.32	24.66
25	53.04	47.04	38.38
37	69.40	63.50	54.84

Specifications:

Current Rating:3.0A AC,DC

Voltage Rating:250V AC,DC

Temperature Range:-55°C ~ +105°C

Contact Resistance:30mohm max.

Insulation Resistance:1000Mohm min. at 500V DC

Withstanding Voltage:500V AC/Minute



Materials:

Insulator:PBT (UL 94V-0)

Insulator Color:Black

Contact:Brass

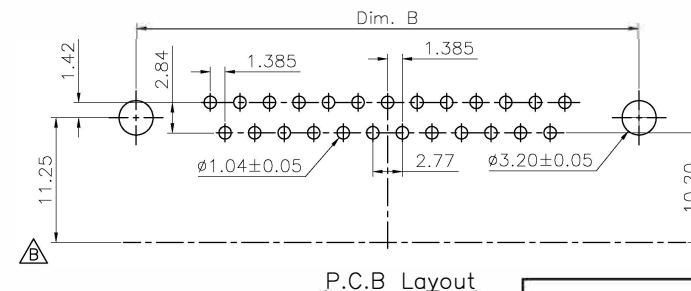
Plating:Gold Plated 0.8u" Over Nickel Plated 30u"

Shell:SPCC, Nickel Plated

How To Order

5504F2-XXS-XX-XX

- 01:Full Gold plated
- △03:Selective Gold plated
- △0130:Gold Plated 30u" on Contact Area, Gold Flash on Solder Tails.
- 0310:Gold Plated 10u" on Contact Area
- △0330:Gold Plated 30u" on Contact Area Tin Plated on Solder Tails.
- 01:Board Lock/Hex Screw
- 02:Rivet W/Board Lock
- 02A:Rivet W/Board Lock/Hex Screw
- 02B:Rivet W/Board Lock/Attached Hex Screw
- S:Female
- No. Of Positions
- 10.3mm Footprint



RoHS Compliant

REV	DATE	FILE	BY
F			
E			
D	09-MAR-2022	Add Packing List	MEI
C	14-SEP-2020	△	ROMINA
B	13-MAY-2020	Add "0310" Type	JAMIE
A	05-FEB-2018		JACK_HUANG

DRAWN:	JERRY
CHECKED:	
APPROVAL:	
RORY	

GENERAL TOLERANCE:	.X=±0.3 .XX=±0.2
UNIT:	MM
SCALE:	1:1
SHEET:	1/1
PROJECTION:	

Neltron Industrial Co., Ltd.	
DESCRIPTION:	D-SUB Female 10.2mm Footprint Right Angle Type
PART NO:	5504F2-XXS-XX-XX

SIZE	A4
------	-----------