

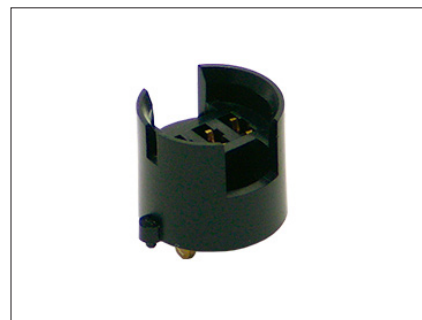
## SR-8 - Sensor Socket for TGS38xx-series Sensors

### Features:

- \* Durable for over 100 insertions and removals
- \* Firmly fixes sensor into place
- \* Contains tab to prevent incorrect insertion of socket
- \* Structure prevents incorrect insertion of sensor into socket

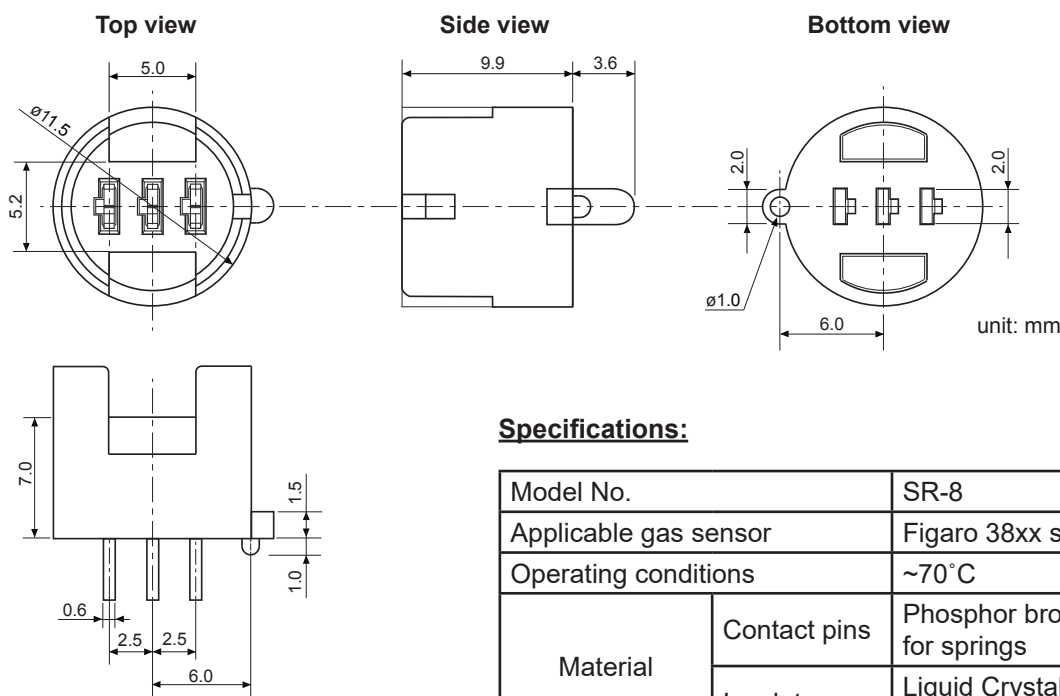
### Applications:

- \* For use in preheating racks, test and calibration equipment
- \* For use in finished products



SR-8 is a reliable and durable socket supplied by Figaro, designed specifically for usage with the TGS38xx series of gas sensors.

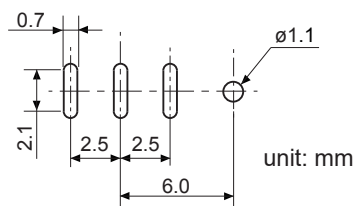
### Structure and Dimensions



### Specifications:

Model No.		SR-8
Applicable gas sensor		Figaro 38xx series
Operating conditions		$\sim 70^{\circ}\text{C}$
Material	Contact pins	Phosphor bronze for springs
	Insulator	Liquid Crystal Polymer (LCP)
Weight		approx 1.3g

### Recommended PCB Layout



### Assembly Instructions:

The pins of the SR-8 are not permanently affixed to the socket. The socket should be soldered onto a PCB as follows:

1. Insert TGS38xx sensor into socket
2. Insert socket onto PCB
3. Affix socket to PCB by soldering
4. Withdraw sensor from socket